



rain®

face shield

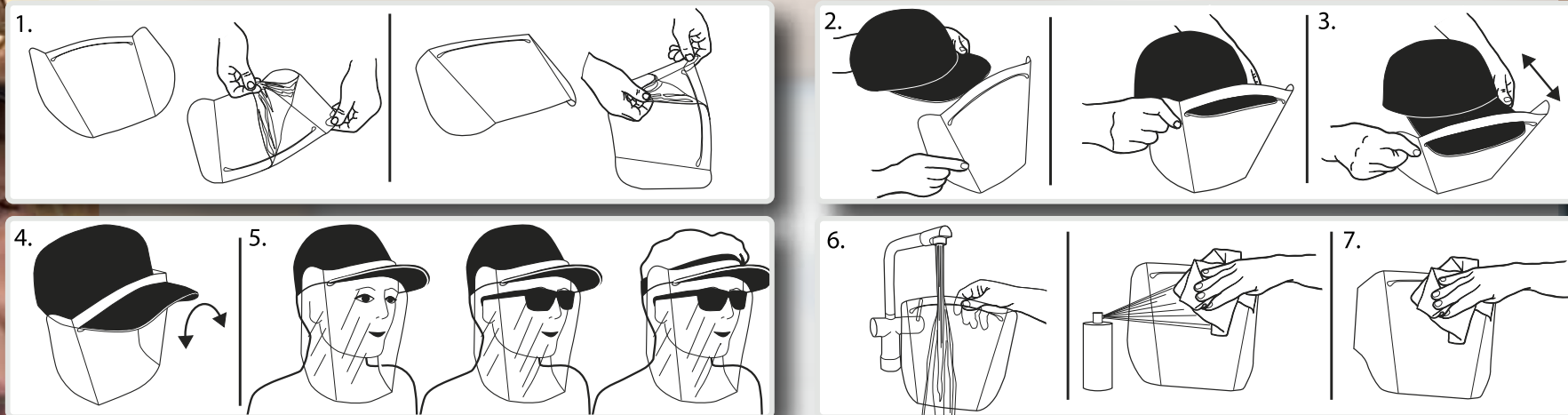
CE EN 166 1 S3



SPEDE-IDEA OY

spede-idea.com

How to use:



Instructions for use intended: personal protection of the user's face and eyes during activities in industry, healthcare, laboratories, educational activities, private activities, and other similar purposes. Visor protects the user from airborne mixtures, splashes, particles, liquid droplets and flying debris. Not for use by children under 14 years. Not intended protection of high-speed particles or harmful biological agents.

WARNING: DUE TO POSSIBILITY OF STATIC ELECTRICITY DO NOT USE IN EXPLOSIVE OR FLAMMABLE ATMOSPHERES

1. Wash and dry your hands. Remove the films covering the visor.
2. Push the peak of the cap through the slot in the visor.
3. Adjust the distance between the visor and the face.
4. Bend the peak to lock the visor into the desired form.
5. The visor is ready for use when it becomes curved outwards.
6. Wash the visor with warm water and dishwashing liquid or alcohol-based disinfectant before reuse.
7. To dry, use a piece of soft, clean cloth.
8. Cap may be handwashed in +40 C degrees using colored textile washing agents or cleaned using alcohol-based disinfectants.
9. Storage: protect from sunlight. May be stored in normal room temperatures.
10. Only original Raimo visor components may be used for replacement.

Benefits of and tips for using a protective visor

- A protective visor stops droplets and other splashes, bringing added protection to encounters.
- Protective visors protect both their users and people around them.
- A protective visor covers not only the mouth and nose, but also the eyes, which have mucous membranes that are sensitive to droplets.
- A protective visor is not disposable but can be cleaned easily and used again and again
- Although a protective visor is not a certified protective equipment against impacts, users have found it useful, for example, when travelling in the forest, painting with spray paints, washing a car or doing other things or during hobbies that require protection for the eyes and face.
- Although a protective visor does not replace the nose/mouth mask, it is suitable for use in physically heavier performances where the nose/mouth mask is too hot and makes breathing difficult
- In some situations, users, as well as health professionals, have identified the collective use of protective visors and nose/mouth masks as a very effective means of protection

Ease of use

- Suitable for caps with curved brims, straight brims can usually be curved.
- Easy to use; the ergonomic protective visor attaches to the desired part of the brim thanks to its unique design, making the distance to the face easily adjustable.
- The protective visor is also suitable for other headgear with a brim e.g. sun visors.
- The protective visor is also suitable for use with glasses or sunglasses without fogging them up.
- You can store the protective visor flat even in a bag and use when necessary

Hygiene

- The protective visor is supplied with a protective film on each side to ensure cleanliness and brightness. The protective film is removed when the protective visor is first used.
- It is easy to keep the protective visor clean by washing it with water and soap/dishwashing detergent/disinfectant and drying it with some soft material. You can also dry the protective visor conveniently by attaching it to a brim to dry!
- The protective visor does not have any straps, adjusting screws or other difficult-to-clean parts.
- Careful cleaning and disinfection of the protective visor is recommended after each use.

Open and clear communication

- When using a protective visor, facial expressions are visible, making communication significantly smoother than if the nose and mouth are covered, according to users.
- A protective visor has been very helpful in therapy work, care for the elderly and children, and in all tasks requiring human contact, making it important to meet and interact in a mutually warm and safe sense. Interact and convey emotions instead of droplets.
- Users have felt that a protective visor attached to a cap is discreet and easy to use in all kinds of service situations, such as customer service and teaching. In customer service, the protective visor can often be attached to caps or brimmed headgear already worn.
- In the work of government and security personnel, clear communication that does not have to be repeated plays an important role and is made possible by a transparent protective visor. In addition, it is often directly compatible with existing equipment and clothing.

Customer service and business use

- Users have found this brim-mounted protective visor more convenient to use, without feeling uncomfortable.
- The combination of a protective visor and a cap has been found to be highly ergonomic and to match people's facial features and dimensions.
- A protective visor or cap is easy to brand with your company's credentials to communicate the company's responsibility towards customers and employees

Stylish design

- The protective visor is almost invisible compared to other available options.
- The protective visor's unique self-attaching design is discreetly stylish and fits the brimmed headgear of your choice – or just a visor cap if you don't want to cover your hair or head.
- The protective visor is a natural part of safe street fashion and its design fits all styles, accentuating them.



CE EN 166 1 S 3

Spede-Idea Oy
FINLAND
www.spede-idea.com

raimo®
face shield



SPEDE-IDEA OY

spede-idea.com

CE EN 166 1 S 3

Spede-Idea Oy
FINLAND
www.spede-idea.com

raimo®
face shield